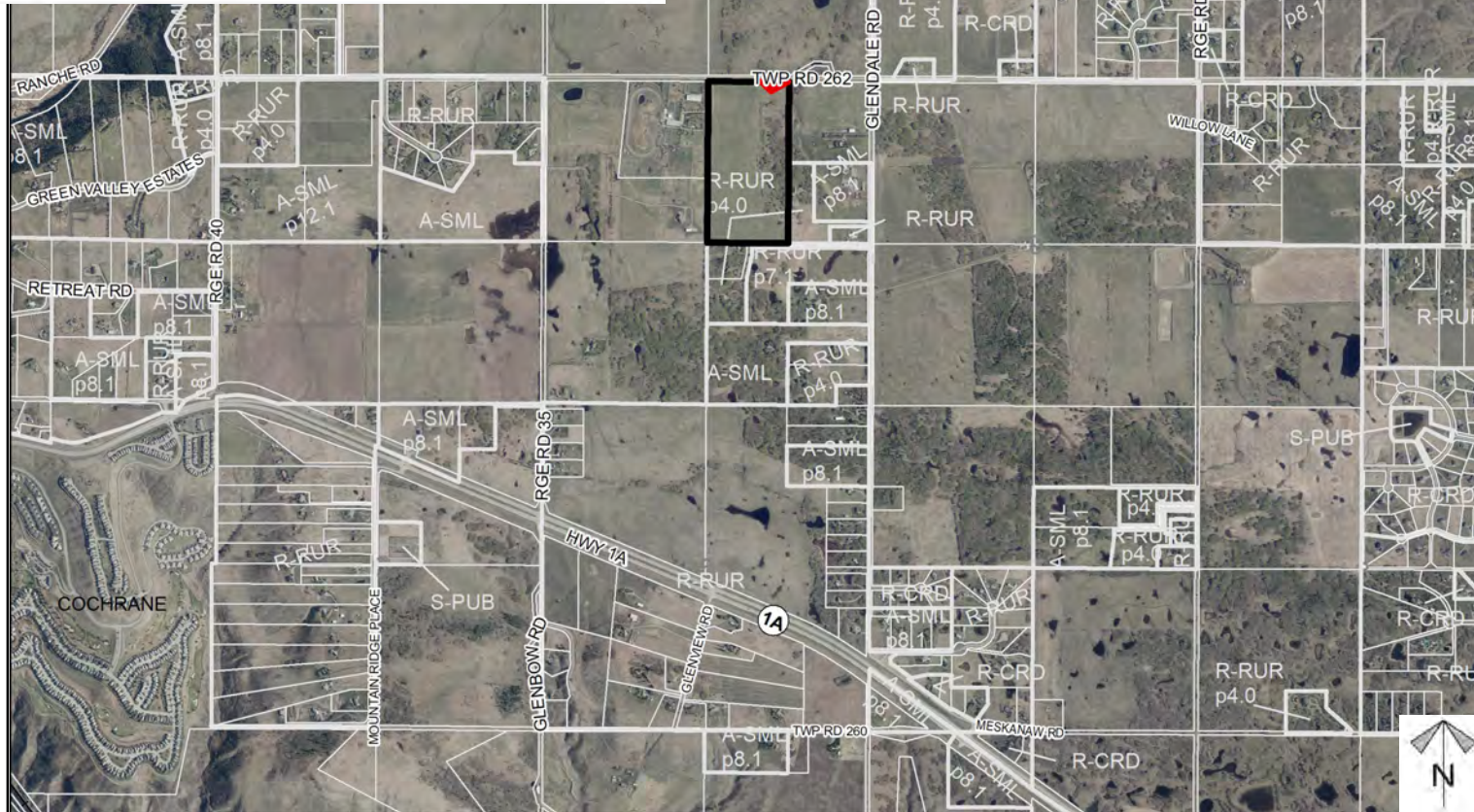
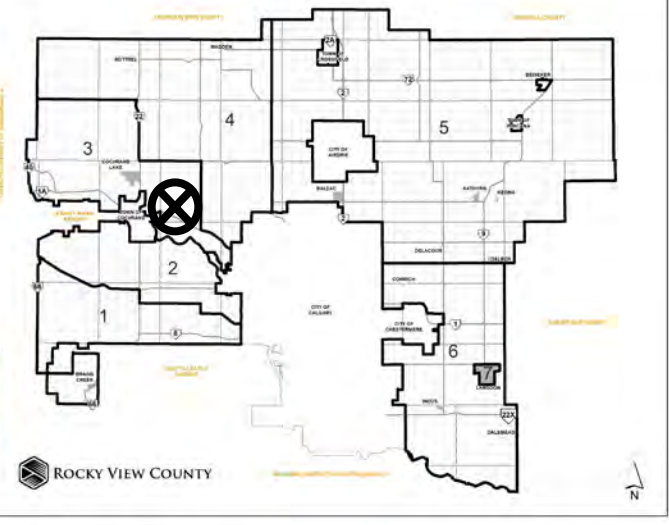




## Location & Context

### Road Closure Proposal

To close a  $\pm 0.23$  hectare ( $\pm 0.58$  acre) portion of undeveloped road allowance (Road Plan 2479 Q), in order to facilitate a future consolidation into the lands at NE-8-27-4-W5M



Division: 3  
Roll: 06708005  
File: PL20220104  
Printed: Aug 30, 2022  
Legal: A portion of NE-8-26-03-W05M






## Development Proposal

### Road Closure Proposal

To close a  $\pm 0.23$  hectare ( $\pm 0.58$  acre) portion of undeveloped road allowance (Road Plan 2479 Q), in order to facilitate a future consolidation into the lands at NE-8-27-4-W5M

TWP RD 262



To close all that portion  
of Road Plan 2479 Q  
within the north east  
quarter Section 8,  
Township 26, Range 3,  
West of the 5th Meridian,  
containing 0.234 hectares  
(0.58 acres) more or less.

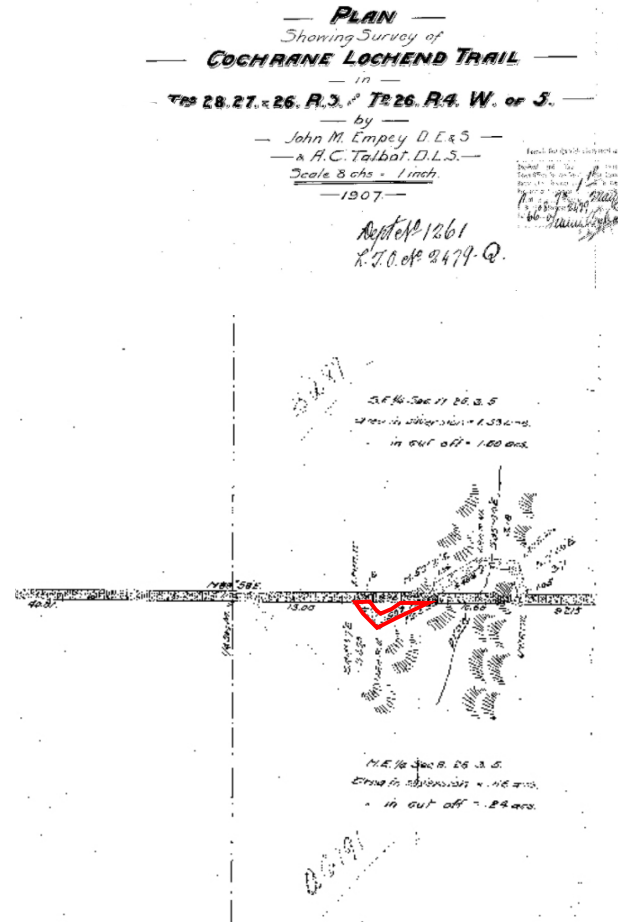
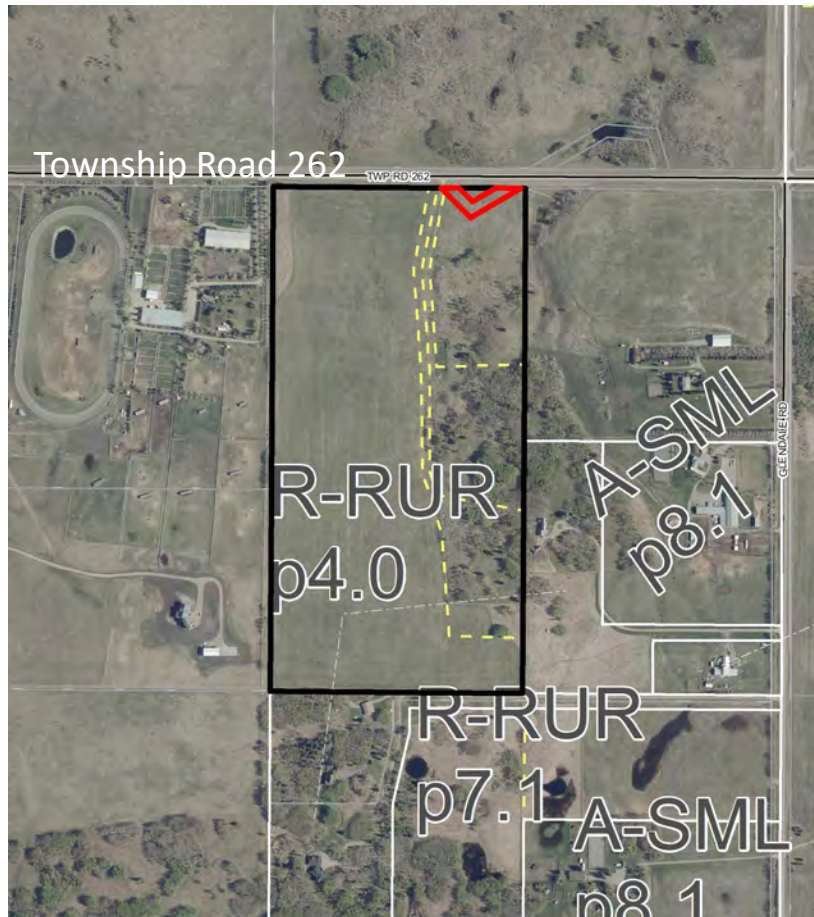


Division: 3  
Roll: 06708005  
File: PL20220104  
Printed: Aug 30, 2022  
Legal: A portion of NE-08-26-  
03-W05M



# Road Closure Proposal

To close all of Road Plan 2479Q within NE-08-26-3-W05M, containing  $\pm 0.23$  hectare ( $\pm 0.58$  acre) portion of the undeveloped road allowance for the purpose of consolidation.



## Road Closure Proposal

To close a  $\pm 0.23$  hectare ( $\pm 0.58$  acre) portion of undeveloped road allowance (Road Plan 2479 Q), in order to facilitate a future consolidation into the lands at NE-8-27-4-W5M

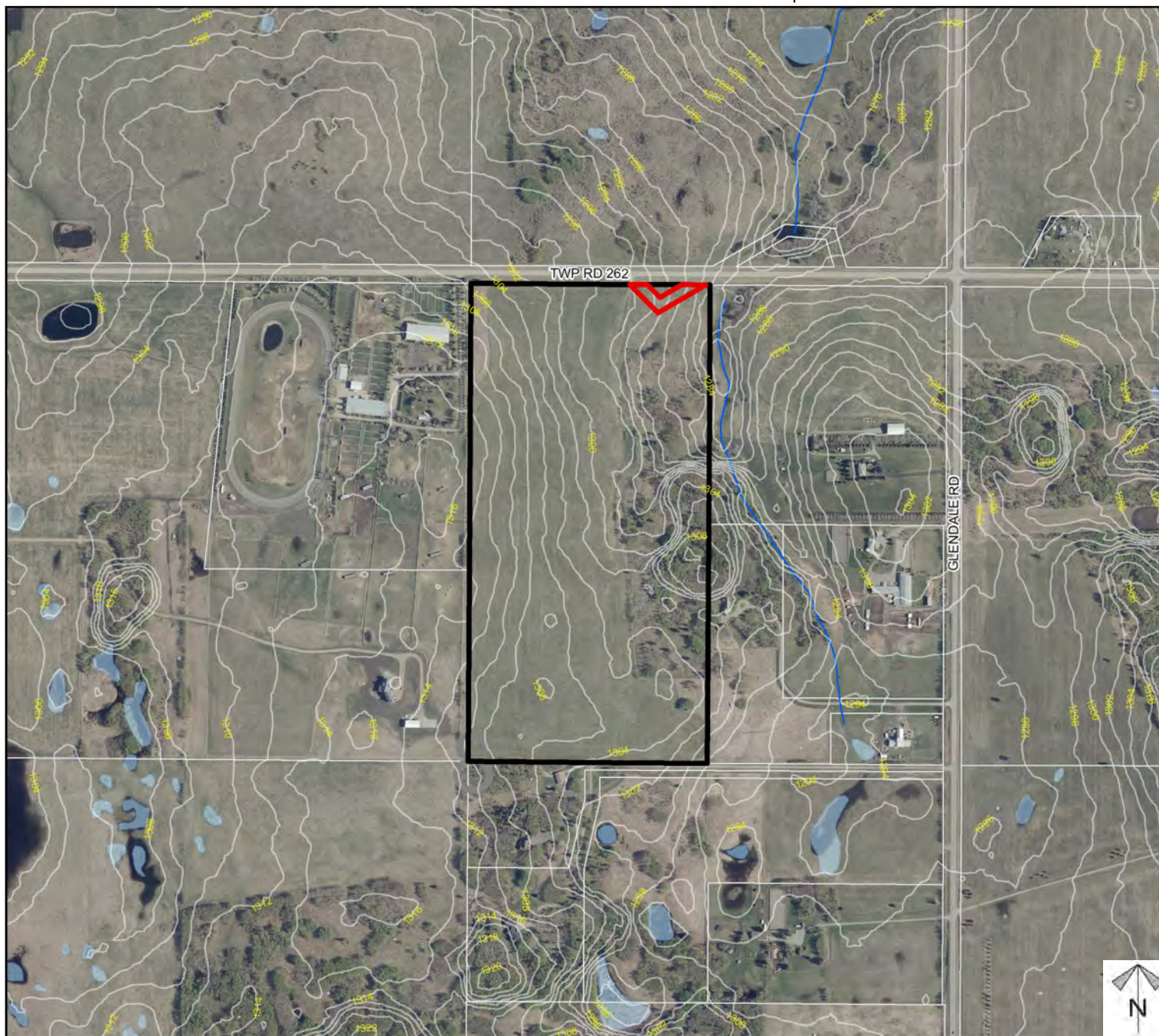
Division: 3  
Roll: 06708005  
File: PL20220104  
Printed: Aug 30, 2022  
Legal: A portion of NE-08-26-03-W05M



## Environmental

### Road Closure Proposal

To close a  $\pm 0.23$  hectare ( $\pm 0.58$  acre) portion of undeveloped road allowance (Road Plan 2479 Q), in order to facilitate a future consolidation into the lands at NE-8-27-4-W5M



-  Subject Lands
-  Contour - 2 meters
-  Riparian Setbacks
-  Alberta Wetland Inventory
-  Surface Water

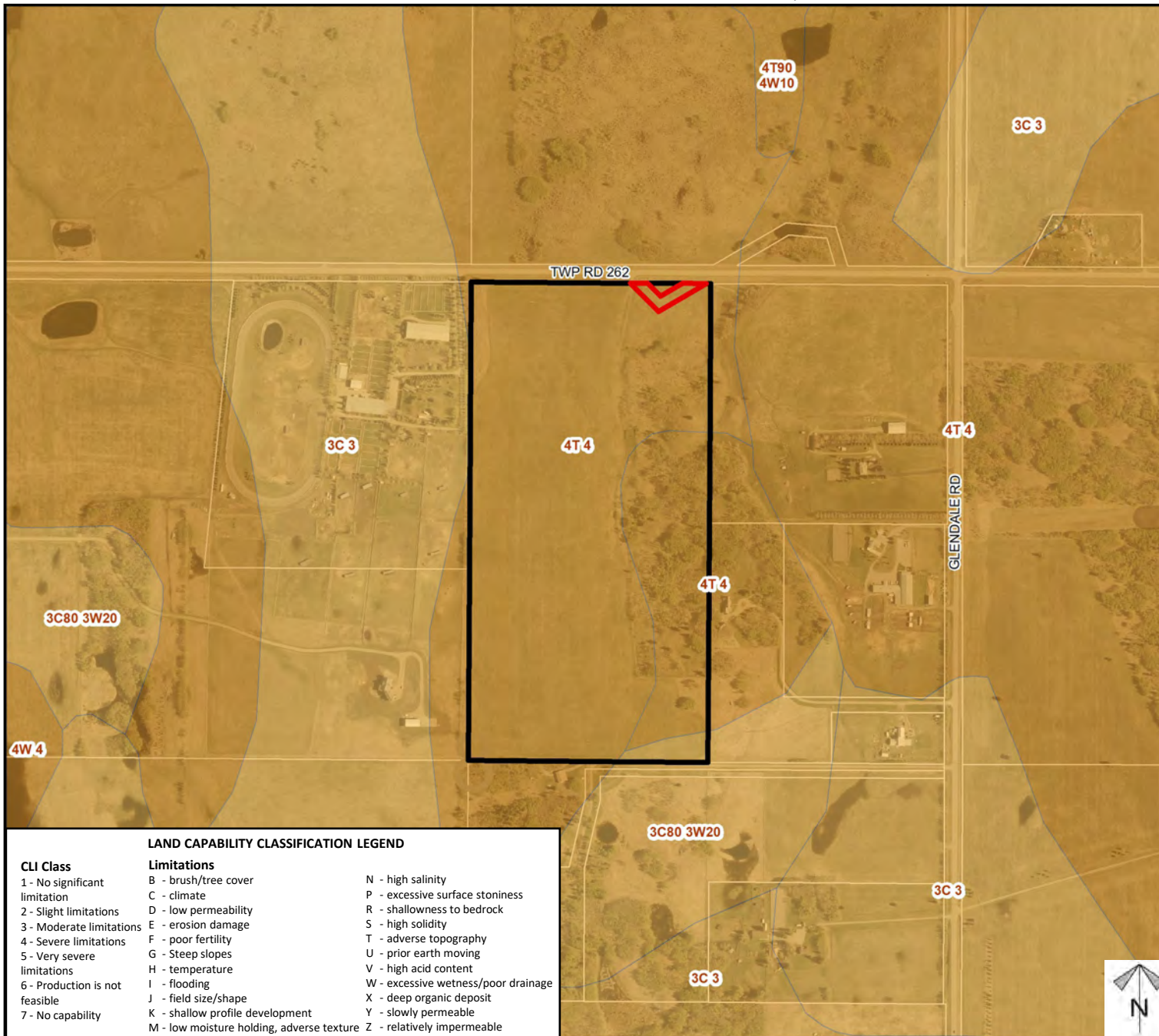
Division: 3  
 Roll: 06708005  
 File: PL20220104  
 Printed: Aug 30, 2022  
 Legal: A portion of NE-08-26-03-W05M



## Soil Classifications

### Road Closure Proposal

To close a  $\pm 0.23$  hectare ( $\pm 0.58$  acre) portion of undeveloped road allowance (Road Plan 2479 Q), in order to facilitate a future consolidation into the lands at NE-8-27-4-W5M



#### LAND CAPABILITY CLASSIFICATION LEGEND

##### CLI Class

- 1 - No significant limitation
- 2 - Slight limitations
- 3 - Moderate limitations
- 4 - Severe limitations
- 5 - Very severe limitations
- 6 - Production is not feasible
- 7 - No capability

##### Limitations

- B - brush/tree cover
- C - climate
- D - low permeability
- E - erosion damage
- F - poor fertility
- G - Steep slopes
- H - temperature
- I - flooding
- J - field size/shape
- K - shallow profile development
- M - low moisture holding, adverse texture
- N - high salinity
- P - excessive surface stoniness
- R - shallowness to bedrock
- S - high solidity
- T - adverse topography
- U - prior earth moving
- V - high acid content
- W - excessive wetness/poor drainage
- X - deep organic deposit
- Y - slowly permeable
- Z - relatively impermeable

Division: 3  
Roll: 06708005  
File: PL20220104  
Printed: Aug 30, 2022  
Legal: A portion of NE-08-26-03-W05M

## Road Closure Proposal

To close a  $\pm 0.23$  hectare ( $\pm 0.58$  acre) portion of undeveloped road allowance (Road Plan 2479 Q), in order to facilitate a future consolidation into the lands at NE-8-27-4-W5M

### Legend

## Support



*Not Support*



*Plan numbers that include letters were registered before 1973 and do not reference a year.*

Division: 3  
Roll: 06708005  
File: PL20220104  
Printed: Aug 30, 2022  
Legal: A portion of NE-08-26-03-W05M

**Schedule 'A'****Road Closure Proposal**

To close a  $\pm 0.23$  hectare ( $\pm 0.58$  acre) portion of undeveloped road allowance (Road Plan 2479 Q), in order to facilitate a future consolidation into the lands at NE-8-27-4-W5M

To close all that portion of Road Plan 2479 Q within the north east quarter Section 8, Township 26, Range 3, West of the 5th Meridian, containing 0.234 hectares (0.58 acres) more or less excepting thereout all mines and minerals



Division: 3  
Roll: 06708005  
File: PL20220104  
Printed: Aug 30, 2022  
Legal: A portion of NE-08-26-03-W05M