

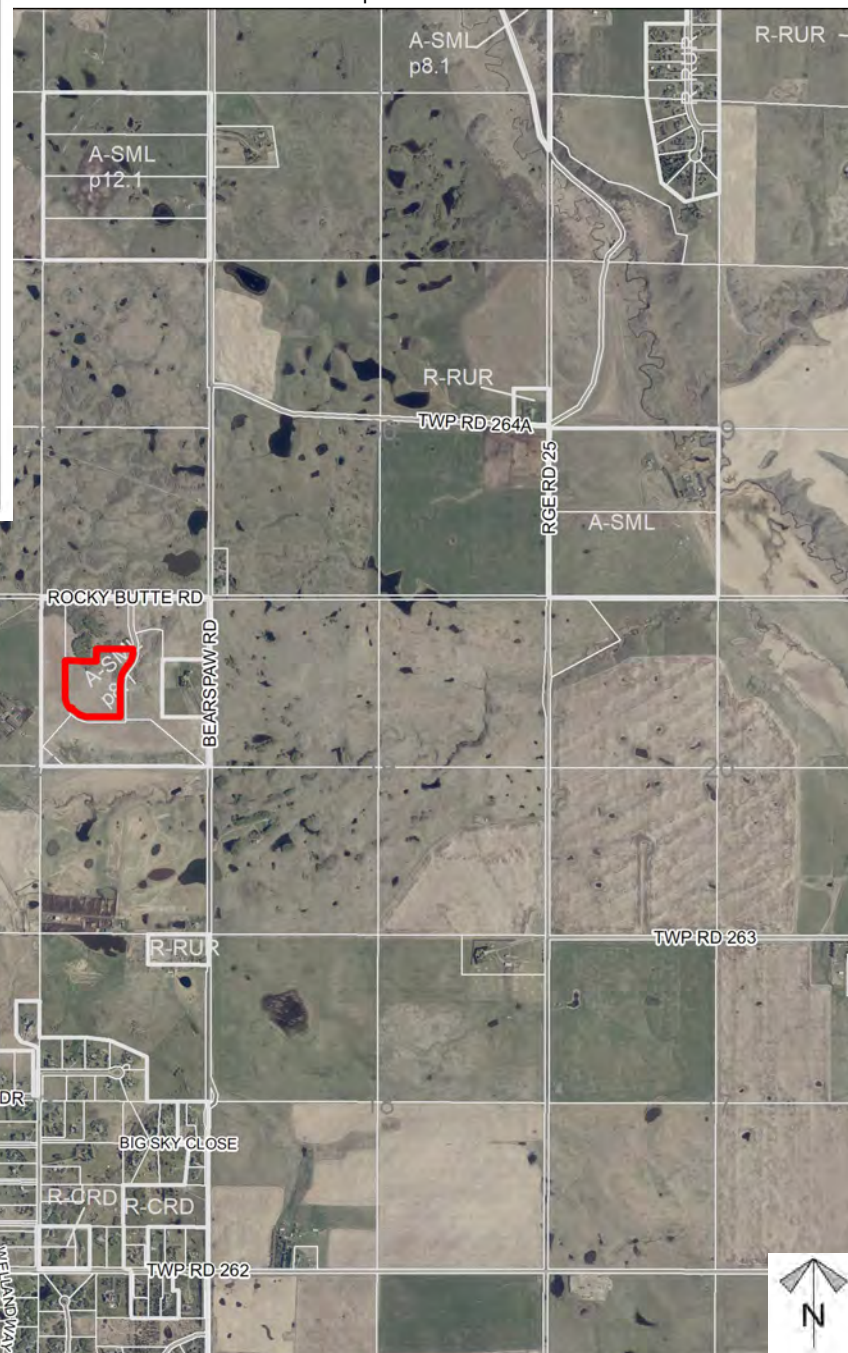
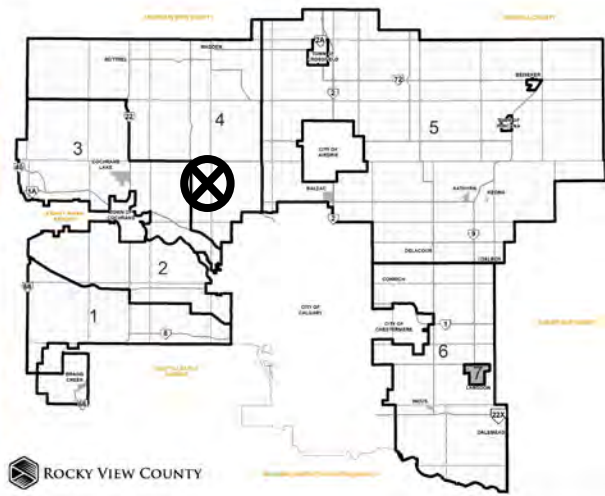


## Location & Context

### Redesignation Proposal

To redesignate the subject lands from Agricultural, Small Parcel District (A-SML p8.1) to Residential, Country Residential District (R-CRD) in order to facilitate the creation of a  $\pm 0.80$  hectare ( $\pm 1.98$  acre) parcel and a  $\pm 1.74$  hectare ( $\pm 4.30$  acre) with a  $\pm 5.56$  hectare ( $\pm 13.74$  acre) remainder.

Division: 4  
Roll: 06724008  
File: PL20220106  
Printed: June 20, 2022  
Legal: Lot:4 Block:2  
Plan:1112512 within NE-24-26-03-W05M





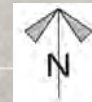
## Development Proposal

### Redesignation Proposal

To redesignate the subject lands from Agricultural, Small Parcel District (A-SML p8.1) to Residential, Country Residential District (R-CRD) in order to facilitate the creation of a  $\pm 0.80$  hectare ( $\pm 1.98$  acre) parcel and a  $\pm 1.74$  hectare ( $\pm 4.30$  acre) with a  $\pm 5.56$  hectare ( $\pm 13.74$  acre) remainder.

A-SML p8.1  $\rightarrow$  R-CRD  
 $\pm 8.10$  ha  
( $\pm 20.02$  ac)

VINCENT BLUFFS CRESCENT



Division: 4  
Roll: 06724008  
File: PL20220106  
Printed: June 20, 2022  
Legal: Lot:4 Block:2  
Plan:1112512 within NE-24-  
26-03-W05M



## Development Proposal

### Potential Future Subdivision Proposal

To create a  $\pm 1.74$  ha ( $\pm 4.30$  ac) parcel, a  $\pm 0.80$  ha ( $\pm 1.98$  ac) parcel, with a  $\pm 5.56$  ha ( $\pm 13.74$  ac) remainder. Future country residential development proposed on remainder in future ( $\pm 2$  acre lots expected).



Division: 4  
Roll: 06724008  
File: PL20220106  
Printed: June 20, 2022  
Legal: Lot:4 Block:2  
Plan:1112512 within NE-24-  
26-03-W05M



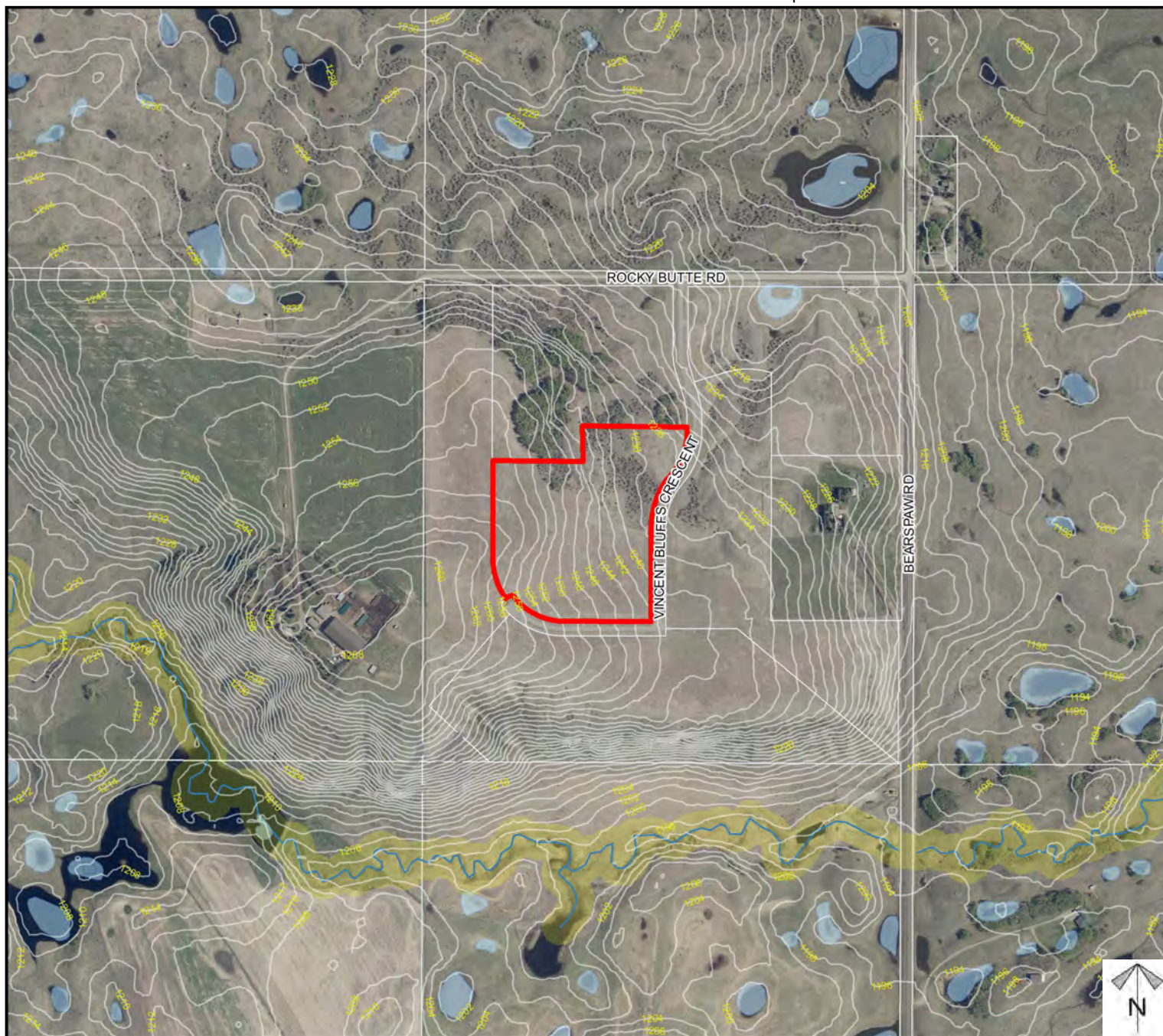
## Environmental

### Redesignation Proposal

To redesignate the subject lands from Agricultural, Small Parcel District (A-SML p8.1) to Residential, Country Residential District (R-CRD) in order to facilitate the creation of a  $\pm 0.80$  hectare ( $\pm 1.98$  acre) parcel and a  $\pm 1.74$  hectare ( $\pm 4.30$  acre) with a  $\pm 5.56$  hectare ( $\pm 13.74$  acre) remainder.

-  Subject Lands
-  Contour - 2 meters
-  Riparian Setbacks
-  Alberta Wetland Inventory
-  Surface Water

Division: 4  
Roll: 06724008  
File: PL20220106  
Printed: June 20, 2022  
Legal: Lot:4 Block:2  
Plan:1112512 within NE-24-  
26-03-W05M

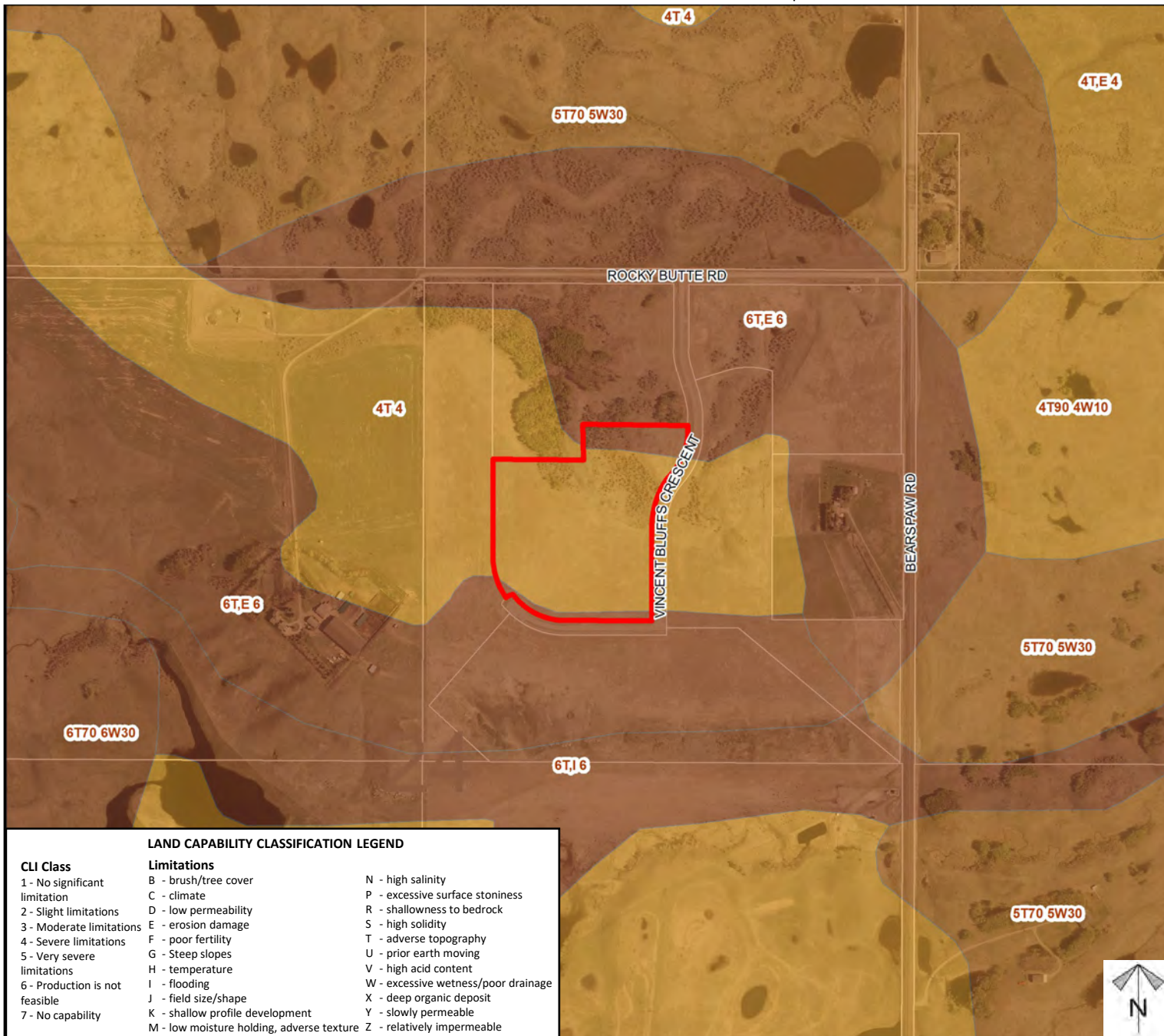




## Soil Classifications

### Redesignation Proposal

To redesignate the subject lands from Agricultural, Small Parcel District (A-SML p8.1) to Residential, Country Residential District (R-CRD) in order to facilitate the creation of a  $\pm 0.80$  hectare ( $\pm 1.98$  acre) parcel and a  $\pm 1.74$  hectare ( $\pm 4.30$  acre) with a  $\pm 5.56$  hectare ( $\pm 13.74$  acre) remainder.



#### LAND CAPABILITY CLASSIFICATION LEGEND

##### CLI Class

- 1 - No significant limitation
- 2 - Slight limitations
- 3 - Moderate limitations
- 4 - Severe limitations
- 5 - Very severe limitations
- 6 - Production is not feasible
- 7 - No capability

##### Limitations

- B - brush/tree cover
- C - climate
- D - low permeability
- E - erosion damage
- F - poor fertility
- G - Steep slopes
- H - temperature
- I - flooding
- J - field size/shape
- K - shallow profile development
- M - low moisture holding, adverse texture
- N - high salinity
- P - excessive surface stoniness
- R - shallowness to bedrock
- S - high solidity
- T - adverse topography
- U - prior earth moving
- V - high acid content
- W - excessive wetness/poor drainage
- X - deep organic deposit
- Y - slowly permeable
- Z - relatively impermeable

Division: 4

Roll: 06724008

File: PL20220106

Printed: June 20, 2022

Legal: Lot:4 Block:2

Plan:1112512 within NE-24-26-03-W05M





## Landowner Circulation Area

### Redesignation Proposal

To redesignate the subject lands from Agricultural, Small Parcel District (A-SML p8.1) to Residential, Country Residential District (R-CRD) in order to facilitate the creation of a  $\pm 0.80$  hectare ( $\pm 1.98$  acre) parcel and a  $\pm 1.74$  hectare ( $\pm 4.30$  acre) with a  $\pm 5.56$  hectare ( $\pm 13.74$  acre) remainder.

### Legend

Support



Not Support



Note: First two digits of the Plan Number indicate the year of subdivision registration.

Plan numbers that include letters were registered before 1973 and do not reference a year.

Division: 4  
Roll: 06724008  
File: PL20220106  
Printed: June 20, 2022  
Legal: Lot:4 Block:2  
Plan:1112512 within NE-24-26-03-W05M

