

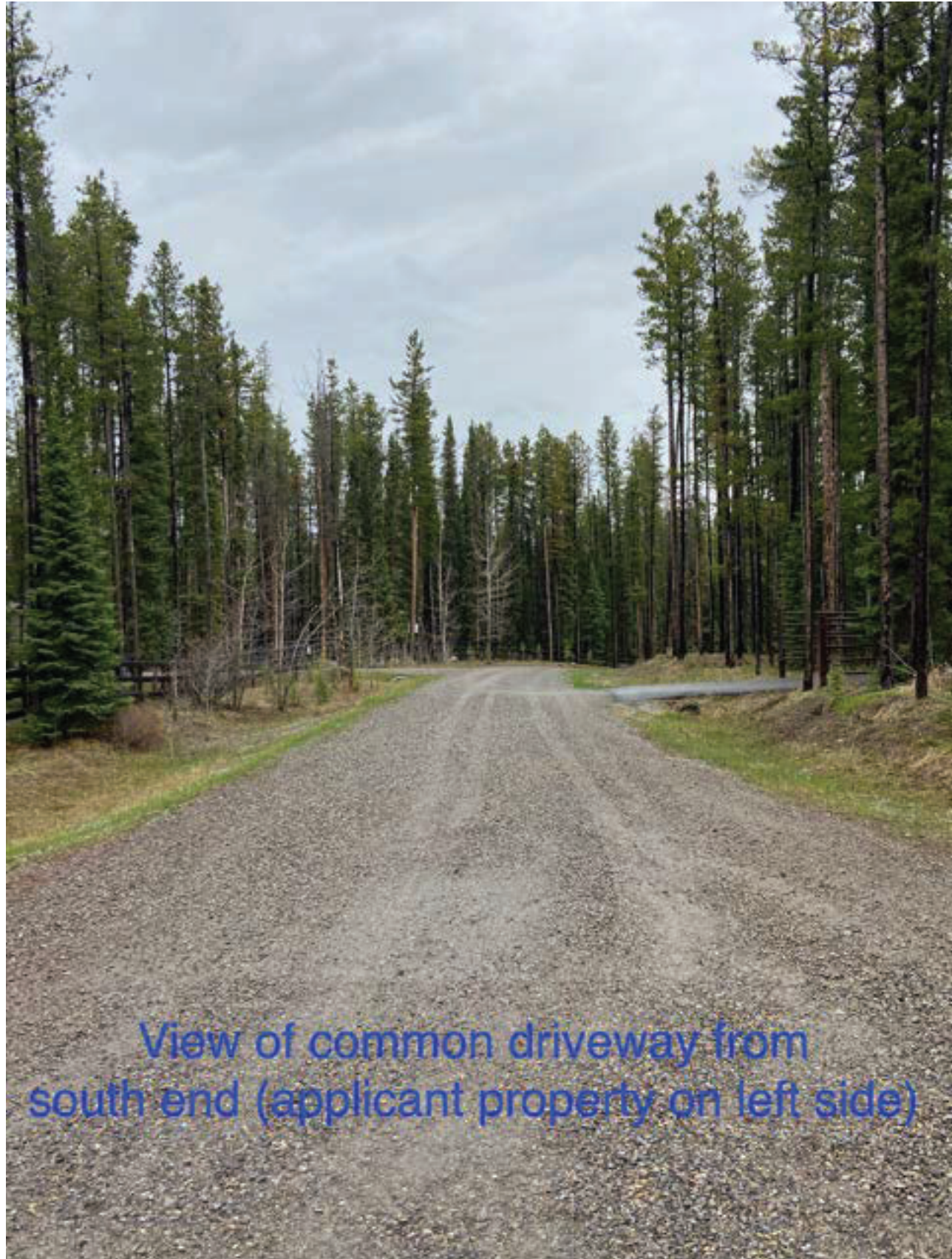






**View to SE neighbors property
from edge of paddock**





View of common driveway from
south end (applicant property on left side)



View of Range Road 232 from the
southeast edge of the driveway
infront of the paddock



View of common road/driveway from
RR. 232 (looking south).
Horses add 1-2 cars per day. LOCAL traffic
for three currently occupied properties is
7-8 cars per day.



View of both properties (heading west)
in proximity to RR 232 (0.7 km to the
cattleguard for Kananaskis Country trails
has high traffic.)